

D

C

B

A

D

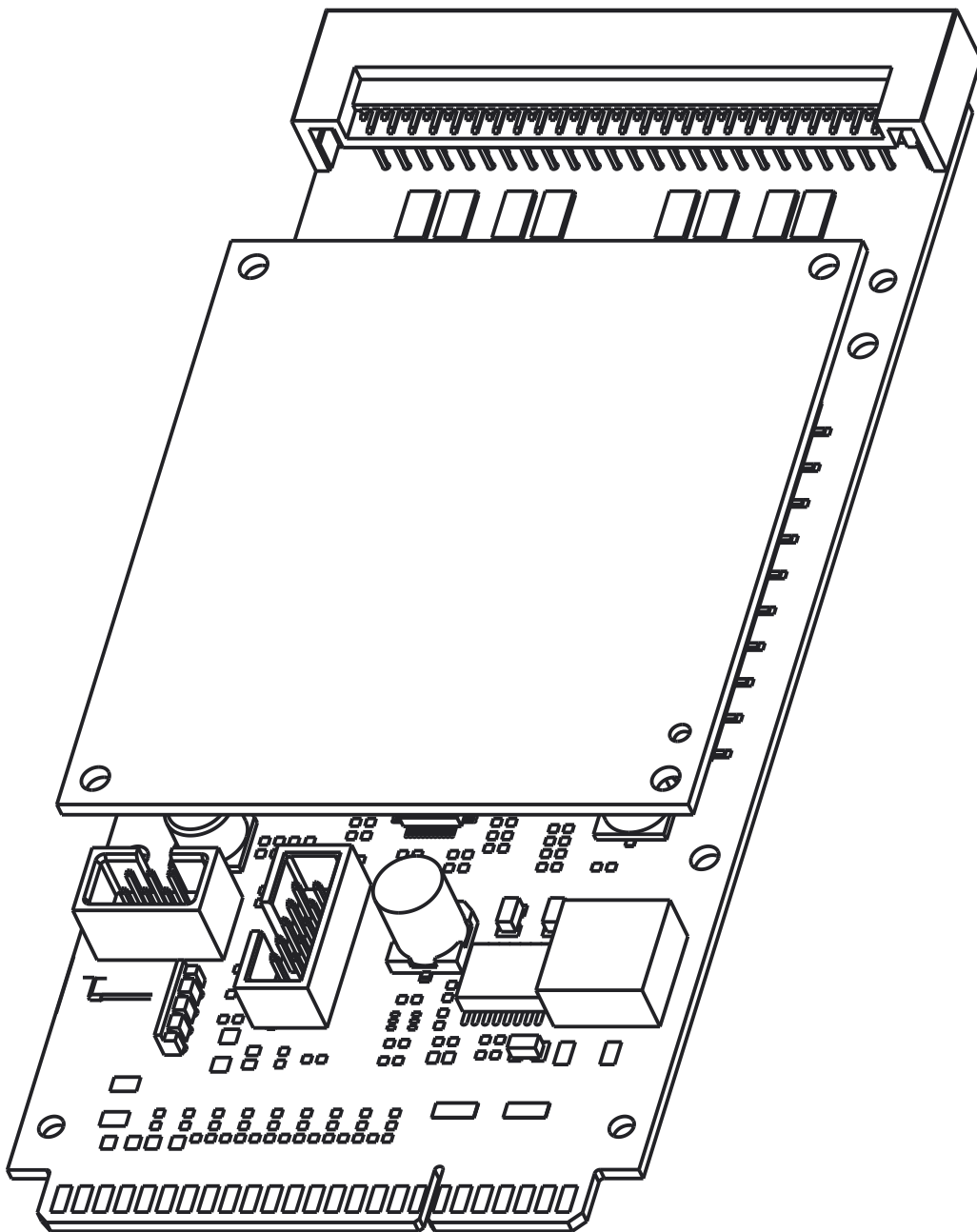
C

B

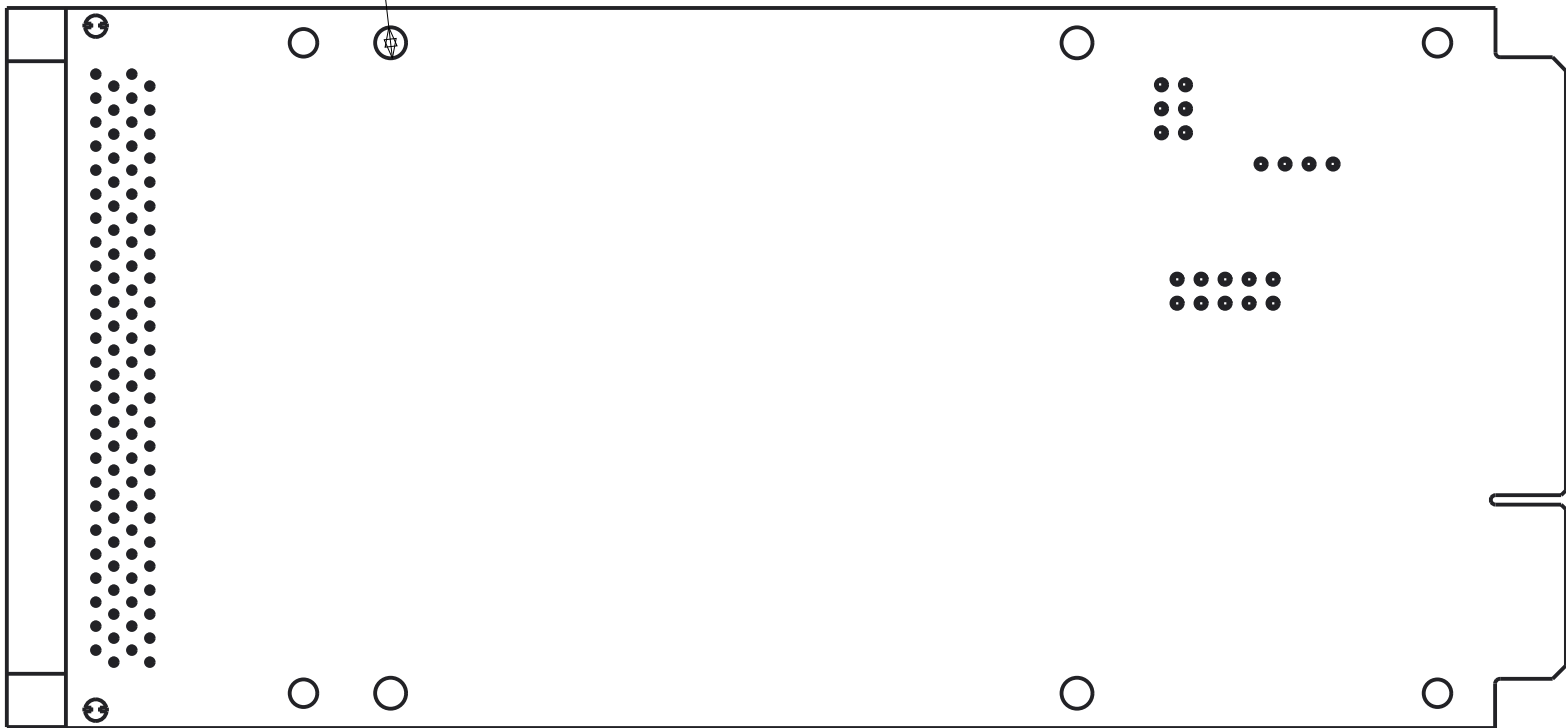
A

NOTES:

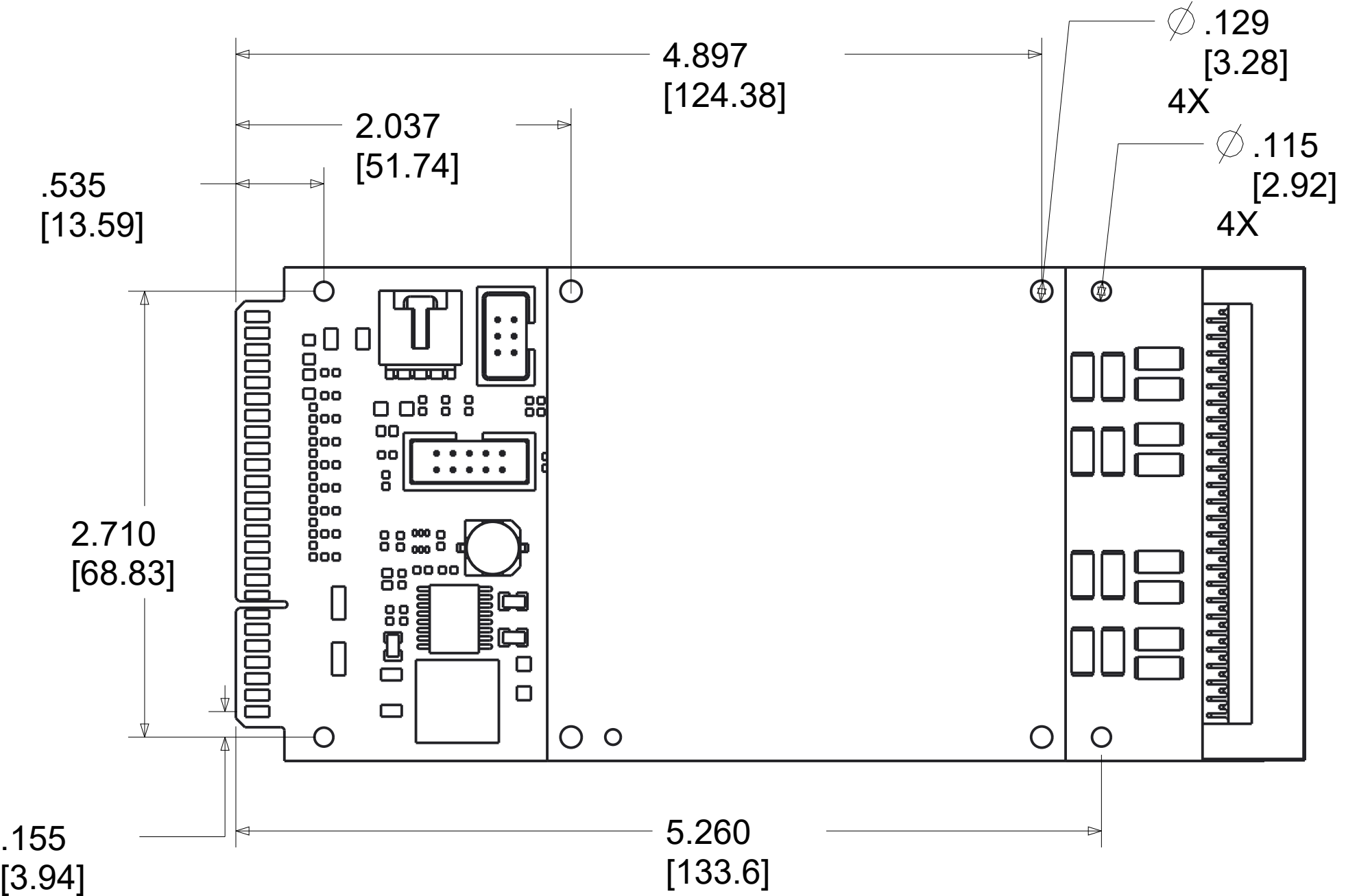
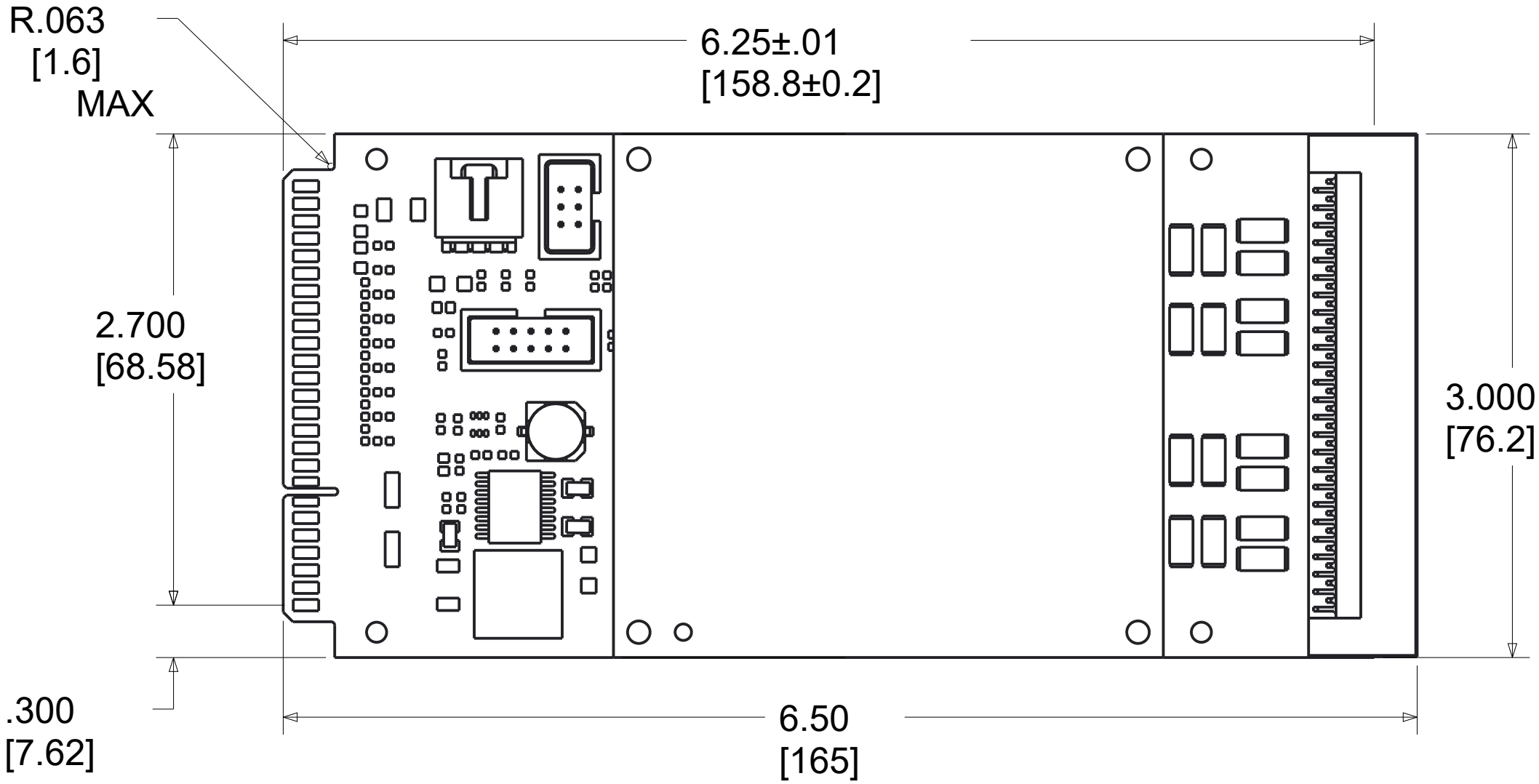
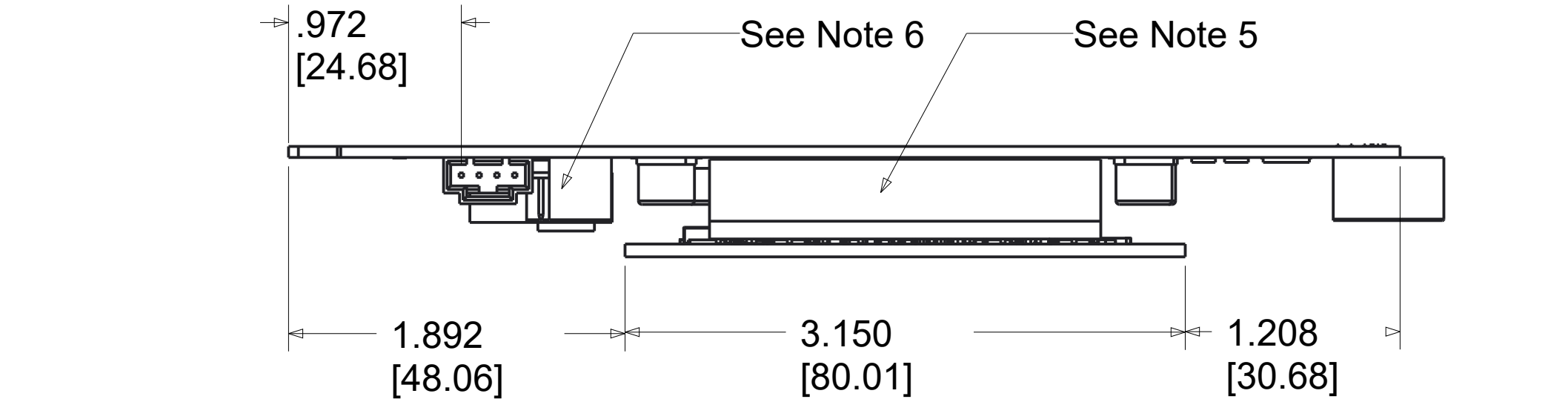
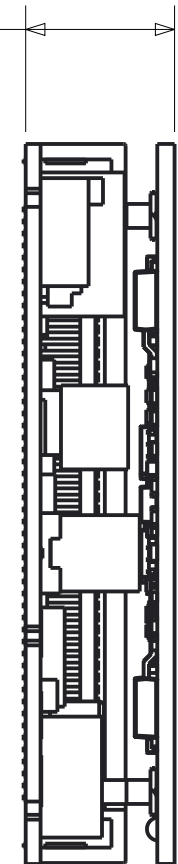
- 1. Dimensions are in inches [mm].
- 2. Recommended mating edge connector or equivalent:
25-pin TE Connectivity p/n 5532600-2
JAE TX24-100R-LT-H1E (Print Head)
- 3. Material:
Digital Unit - .062 [1.57] thick FR-4, 2 oz. Cu conductors.
Analog Unit - .072 [1.83] thick, 2 oz. Cu conductors over 600V dielectric over Al substrate.
- 4. Hard gold plating on edge connector contacts.
- 5. Not recommended that mating connectors between digital and analog units be used as mechanical support.
- 6. When designing or choosing a heatsink, allow adequate space for components on the digital side.
- 7. Use #4 or equivalent screws for analog unit to heatsink.
- 8. Four holes in digital unit, used to access mounting holes of analog unit, are .129in [3.28mm].
- 9. Package Weight: 110 grams.
- 10. Drawing scale: 1.25x



See Note 8
Ø .129
[3.28]
4X



.620±.030
[15.76±0.76]



TOLERANCES - UNLESS OTHERWISE SPECIFIED

.XX ± .01 [.254]
.XXX ± .005 [.127]
ANG. ±5°



TITLE: Card-Edge, 50P Input, 100P Ricoh Output

SUBJECT: PACKAGE OUTLINE

ENGINEER: J.LEITH
DRAWN BY: EAS
DCA: 17170
SH. 1
OF 1

MODEL: ND
FILENAME: ND
REV: A
DATE: 11OCT2017