

4

3

2

1

D

D

C

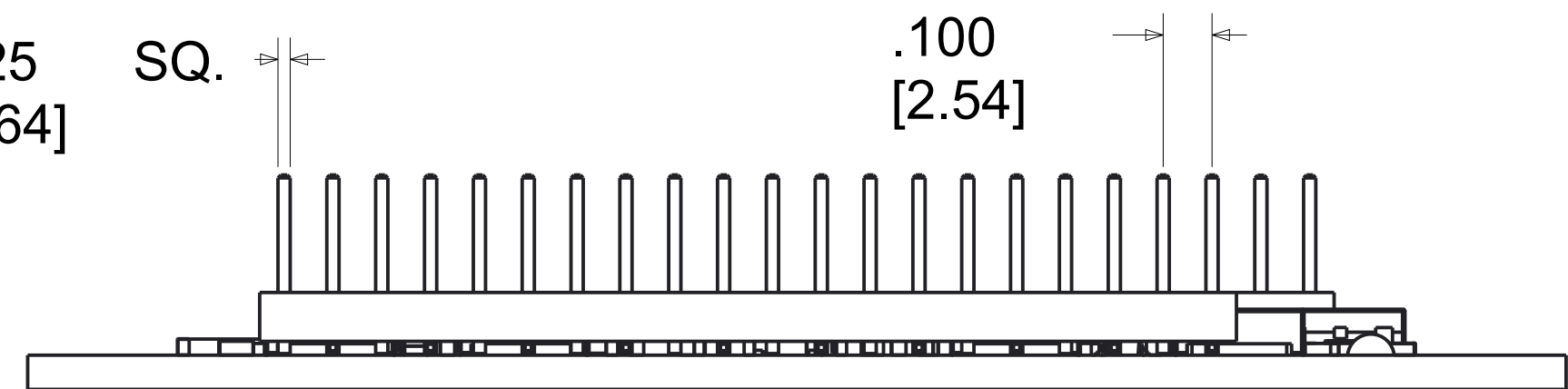
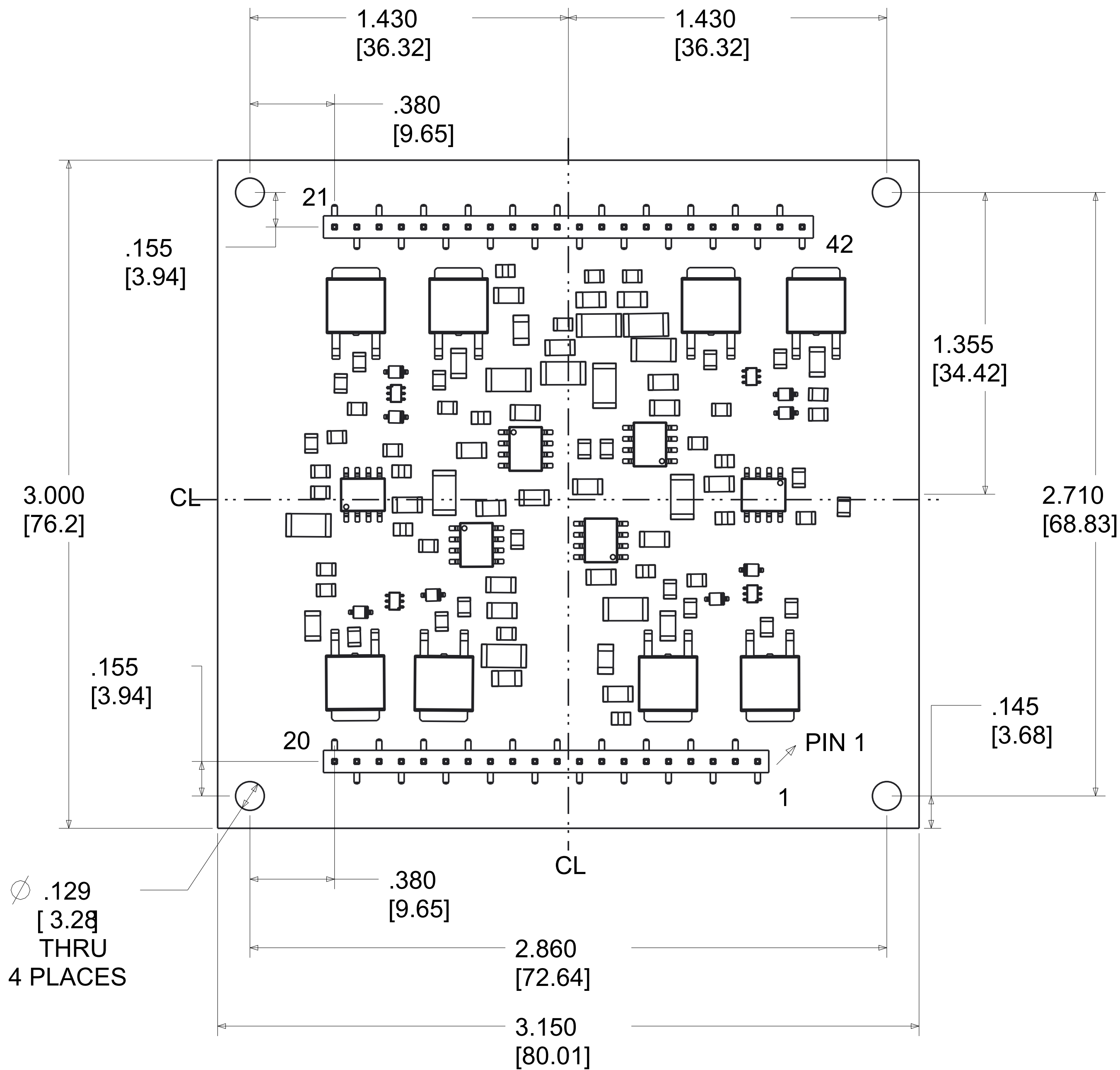
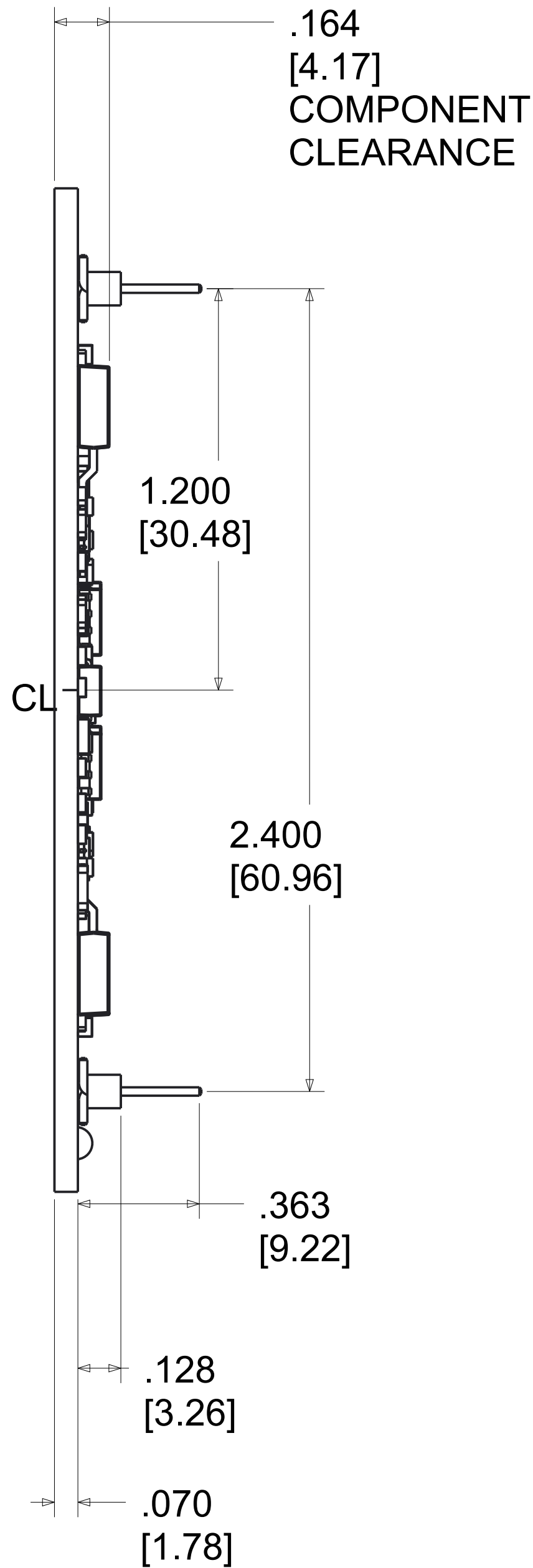
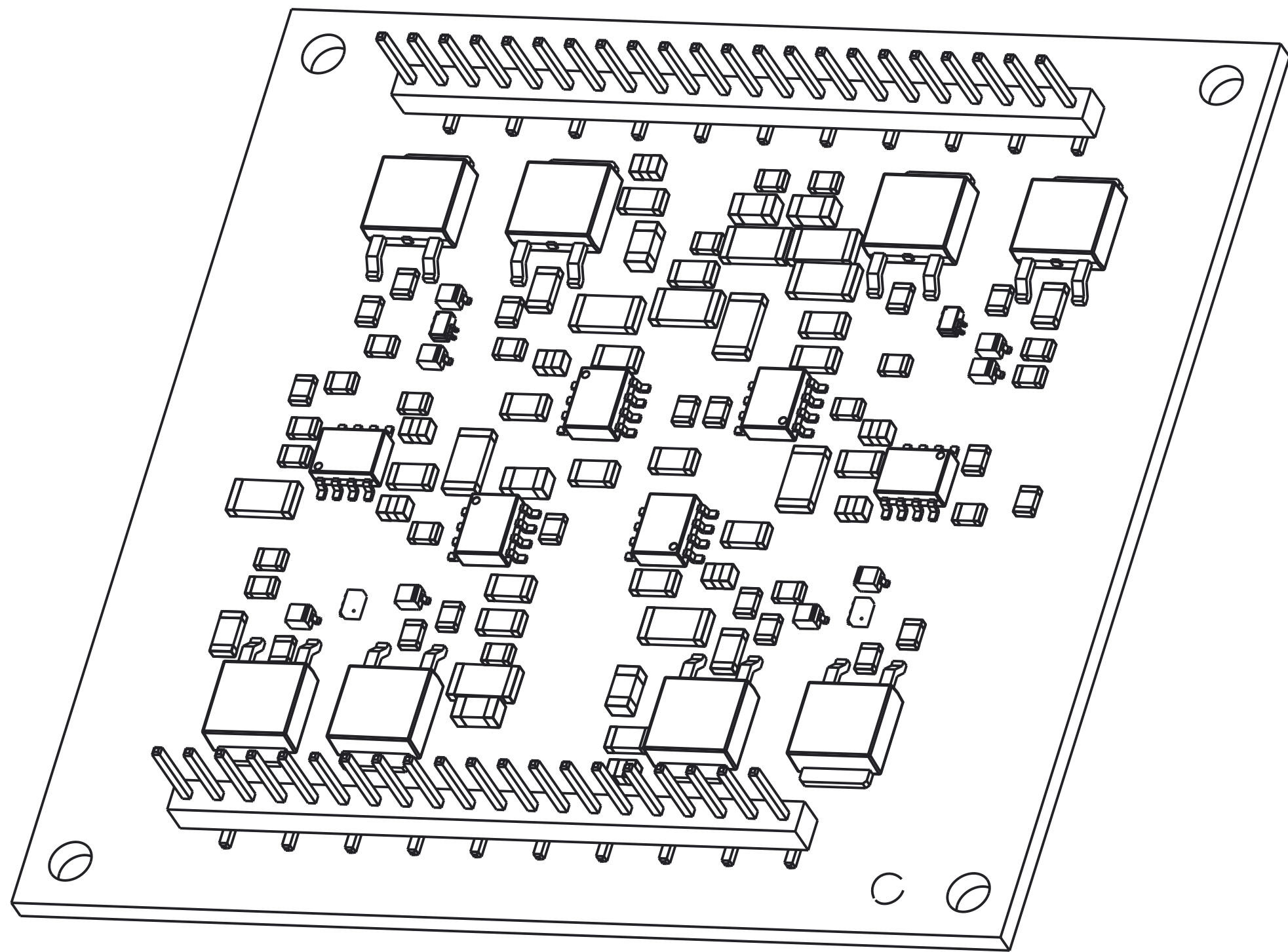
C

B

B

A

A



- Notes:
1. Scale 2.80
 2. Dimensions are in inches; alternate units are [mm].
 3. Recommended PCB hole diameter for pins: 0.050[1.27].
 4. 2oz. copper over 600V dielectric over aluminum substrate.
 5. Tin over nickel plated phospher bronze pins.
 6. It is not recommended that mounting of the package rely on the pins for mechanical support.

TOLERANCES - UNLESS OTHERWISE SPECIFIED	
.XX ±	.01 [.254]
.XXX ±	.005 [.127]
ANG.	±5°



TITLE: MODULAR 42-PIN DIP 2.4" SPACING	
SUBJECT: MECHANICAL DRAWING	
ENGINEER: J.LEITH	DRAWN BY: EAS
DCA: 16389	SH. 1 OF 1

MODEL: KK	
FILENAME: KK	REV: B
DATE: 28SEP16	