

4

3

2

1

D

D

C

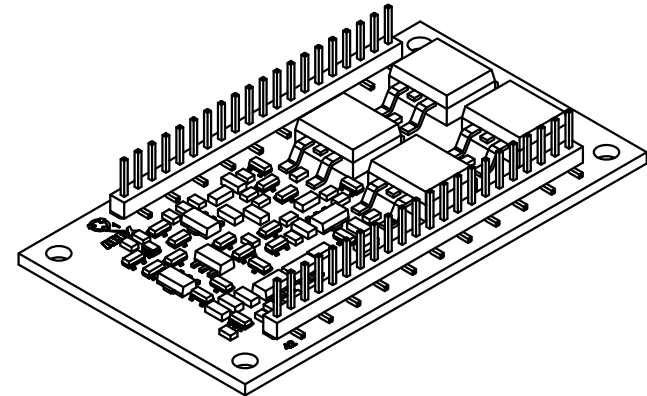
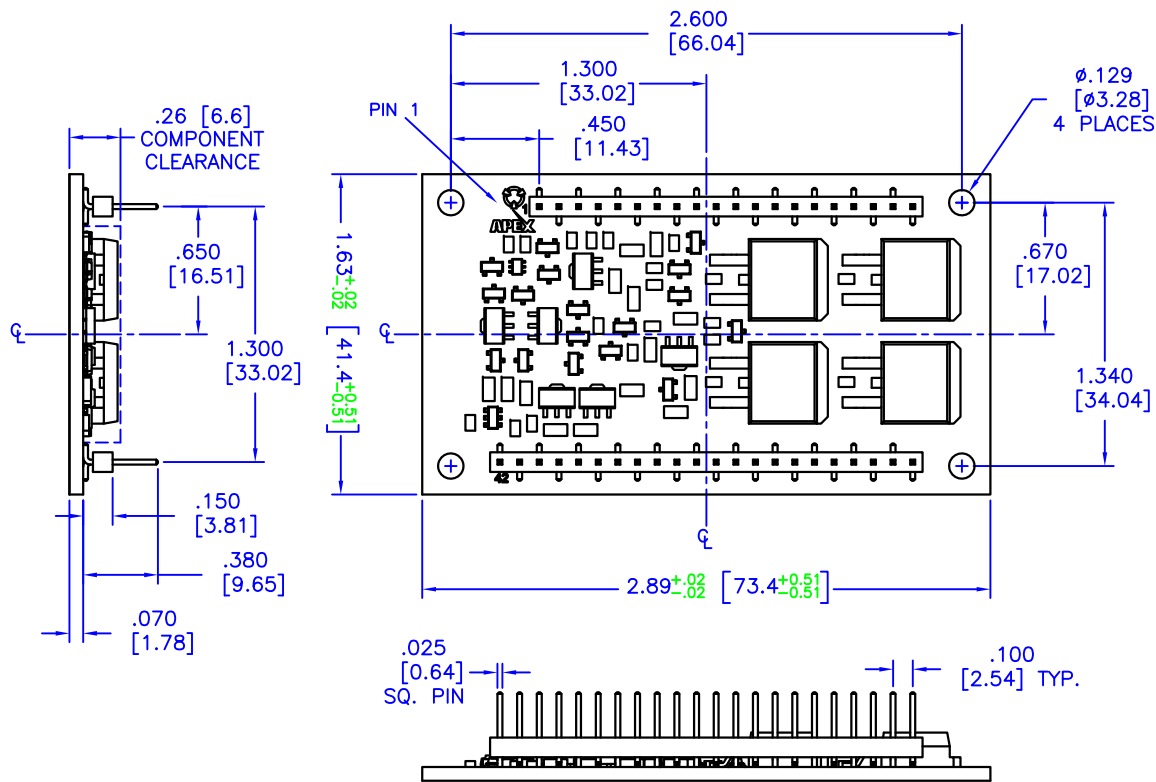
C

B

B

A

A

**NOTES:**

1. Dimensions are inches; alternate units are [mm].
2. Recommended PCB hole diameter for pins: .050 [1.27].
3. 2oz. copper over 600V dielectric over aluminum substrate.
4. Tin over nickel plated phosphor bronze pins.
5. Package weight:
6. Mount with #4 or equivalent screws.
7. It is not recommended that mounting of the package rely on the pins for mechanical support.

TOLERANCES - UNLESS OTHERWISE SPECIFIED

.XX = ±.01 [.254]

.XXX = ±.005 [.127]

ANG. = ±5°



TITLE: MODULAR 42-pin DIP, 1.3" SPACING

SUBJECT:

PACKAGE OUTLINE

ENGINEER: CSM

DRAWN BY: R.MOR

DCA: 13228

SHL

OF

1

MODEL:

FC

FILENAME: FC

REV: 5

DATE: 29MAY13

4

3

2

1