

Evaluation Kit

APPLICABLE PARTS (SOLD SEPARATELY)

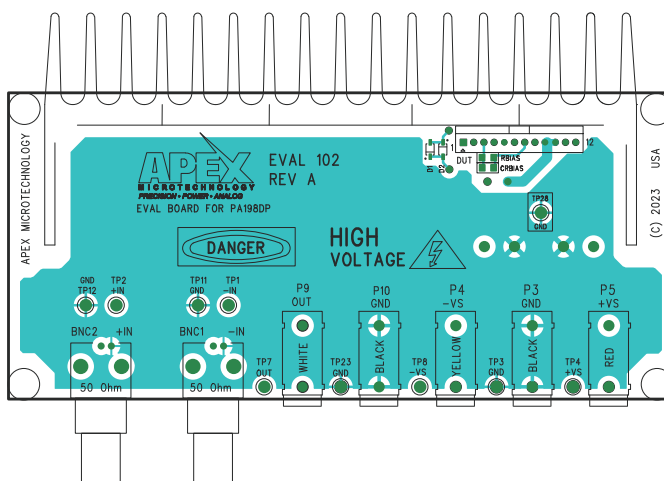
- PA198

INTRODUCTION

This easy-to-use kit provides a platform for the evaluation of linear power amplifier circuits using the PA198 high speed amplifier. Efficient PCB layout allows for evaluation of maximum slew rate capability of amplifier. Critical connections for power supply bypassing, compensation and current limiting are pre-wired through PCB trace. Components that are not normally available in engineering labs are provided in the evaluation kit for convenience. External connections to the evaluation kit can be made via the terminals at the edge of the circuit board. These terminal pads are suitable for standard banana jacks or direct soldering of wires. The schematic is shown in Figure 2.

Figure 1: PCB Layout

TOP SIDE



BOTTOM SIDE

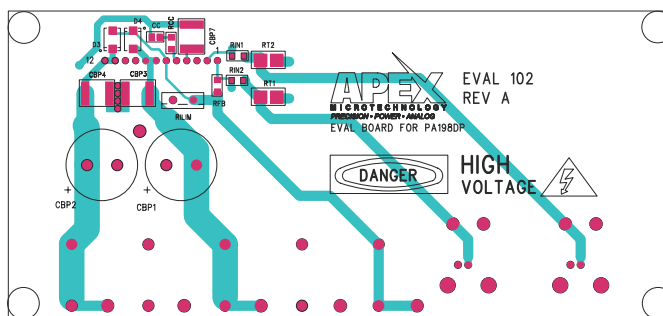
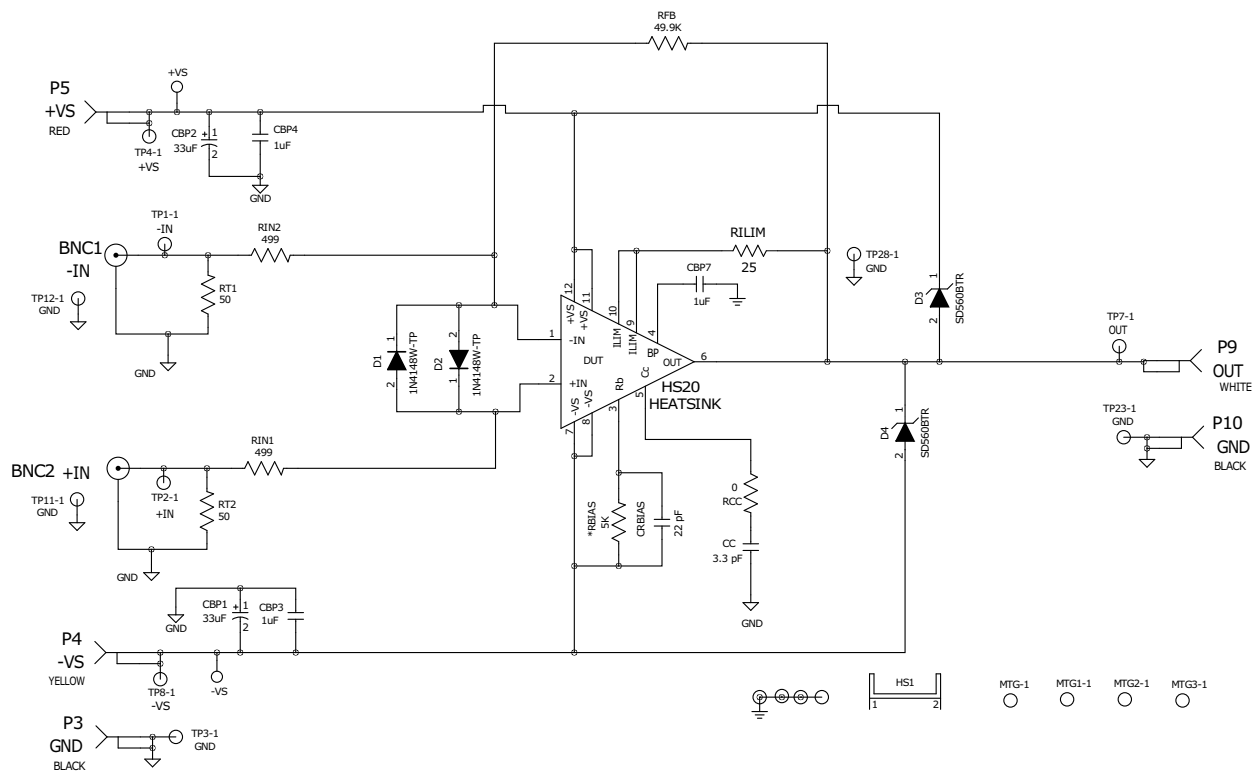


Figure 2: EK Schematic



*OPTIONAL COMPONENTS NOT SUPPLIED WITH EVALUATION KIT

Figure 2 shows the schematic of the evaluation kit's pre-wired connections. Components not supplied with the kit are marked with an asterisk (*).

PARTS LIST

Reference	Manufacturer Part #	Description	QTY
D1-D2	MMDL914T3G	Diode Gen Purp 100V	2
D3-4	SD560BTR	Diode Standard 600V	2
CBP3-4, 7	2220Y5000105KJTW52	Capacitor, 1 μ F Ceramic	3
CBP1-2	UCY2H330MHD3TN	Capacitor, 33 μ F Electrolytic	2
CC	C0805C100JGAC7800	Capacitor, 10 pF	1
CRBIAS	C0805C220JGAC7800	Capacitor, 22 pF	1
RCC	CRCW12060000Z0EBC	Resistor, 0 Ohms Jumper	1
RFB	RMCF1206FT49K9	Resistor, 49.9 kOhms	1
RFB1	RMCF1206FT24K9	Resistor, 24.9 kOhms	1
RBIAS	Optional(Not included)		
RIN1-2	CRCW1206499RFKEAC	Resistor, 499 Ohms	2
RILIM	MP930-4.00-1%	Resistor, 4 Ohms	1
RT1-2	RCP2512W50R0GEB	Resistor, 50 Ohms	2
DUT	PA198DP(Not included)		
TP1-4, TP7-9, TP11-17, TP20-23, TP26, TP28	5009	Yello PC Test Point	20
HS1	HS20	PA198 Package Heatsink	1
BNC1-2	731385033	BNC Connector Jack, Female	2
P3, P10	571-0100	Test Sockets BLACK	2
P4	571-0500	Test Sockets RED	1
P9	571-0600	Test Sockets WHITE	1
P5	571-0700	Test Sockets YELLOW	1
PCB	EVAL102	EK Kit PCB	1
Sockets	MS06	Op-amp PCB Mating Sockets	1
Thermal Washer	TW07	SIP Package Thermal Interface	1

ASSEMBLY INSTRUCTIONS

1. See Figure 1. Solder all surface mount components including ceramic capacitors and film resistors to the TOP side of the circuit board at CRbias, D1 and D2. For the BOTTOM side of the circuit board, be sure to attach CBP3, CBP4, CBP7, Rin1, Rin2, Rfb, RCC, Cc, D3 and D4.
2. Solder the electrolytic capacitors to the circuit board at C3 and C4. Match the polarity markings on the circuit board with those on the capacitor body.
3. Install the through hole current limiting resistor provided. Solder this resistor to the circuit board at R_{LIM}.
4. Examine the large heat sink. Notice that there are several holes in the face of the heat sink. These are for mounting various Apex Microtechnology amplifier models. The circuit board aligns the amplifier with the correct mounting hole once the heat sink is attached to the circuit board. The heatsink can be mounted in either of two positions. One position is used for mounting the amplifier to the heat sink **without** the mating socket strip (the mounting hole of the amplifier is closer to the circuit board). Rotating the heat sink 180 degrees allows mounting the amplifier **with** the mating socket strip (the mounting hole of the amplifier is further from the circuit board).

5. While developing your application circuit you will probably want to use the mating socket strip. Insert the strip into the circuit board from the TOP side and solder one pin on the BOTTOM side. Check that the mating socket strip is fully seated against the circuit board then solder the remaining pins. Insert the amplifier fully into the mating socket strip, noting the pin 1 locations on the amplifier and the circuit board.
6. The four holes at the corners of the circuit board are for mounting #6 standoff spacers if desired. The remaining two slotted holes are for mounting the large heat sink to the DUT side of the circuit board. Temporarily mount the heat sink with 2 #6 X 1/2" self tapping screws from the opposite side of the circuit board. Do not fully tighten the screws at this time. Check for alignment of the slot in the mounting tab of the amplifier with a hole in the heat sink. Dismount and rotate the heat sink if necessary to achieve an alignment with a hole in the heat sink. Position the heat sink so that the back of the amplifier mounting tab is flush with the heat sink then tighten the heat sink mounting screws.
7. Hang the thermal washer near the end of a 6-32 X 1/2" screw. Slightly pull the amplifier away from the heat sink face. Use the screw to position the thermal washer behind the amplifier and insert the screw.
8. While developing your application circuit you will probably want to use the mating socket strip. Insert the strip into the circuit board from the TOP side and solder one pin on the BOTTOM side. Check that the mating socket strip is fully seated against the circuit board then solder the remaining pins. Insert the amplifier fully into the mating socket strip, noting the pin 1 locations on the amplifier and the circuit board.
9. The four holes at the corners of the circuit board are for mounting #6 standoff spacers if desired. The remaining two slotted holes are for mounting the large heat sink to the DUT side of the circuit board. Temporarily mount the heat sink with 2 #6 X 1/2" self tapping screws from the opposite side of the circuit board. Do not fully tighten the screws at this time. Check for alignment of the slot in the mounting tab of the amplifier with a hole in the heat sink. Dismount and rotate the heat sink if necessary to achieve an alignment with a hole in the heat sink. Position the heat sink so that the back of the amplifier mounting is flush with the heat sink then tighten the heat sink mounting screws.
10. Hang the thermal washer near the end of a 6-32 X 1/2" screw. Slightly pull the amplifier away from the heat sink face. Use the screw to position the thermal washer behind the amplifier and insert the screw into the mounting hole of the heat sink. Secure the screw from the opposite side of the heat sink using a nut holder.
11. Finally, install BNC connectors and banana jacks at the edge of the PCB to make it easier to connect to any peripheral devices like power supplies, function generators and/or loads.

NEED TECHNICAL HELP? CONTACT APEX SUPPORT!

For all Apex Microtechnology product questions and inquiries, call toll free 800-546-2739 in North America. For inquiries via email, please contact apex.support@apexanalog.com. International customers can also request support by contacting their local Apex Microtechnology Sales Representative. To find the one nearest to you, go to www.apexanalog.com

IMPORTANT NOTICE

Apex Microtechnology, Inc. has made every effort to insure the accuracy of the content contained in this document. However, the information is subject to change without notice and is provided "AS IS" without warranty of any kind (expressed or implied). Apex Microtechnology reserves the right to make changes without further notice to any specifications or products mentioned herein to improve reliability. This document is the property of Apex Microtechnology and by furnishing this information, Apex Microtechnology grants no license, expressed or implied under any patents, mask work rights, copyrights, trademarks, trade secrets or other intellectual property rights. Apex Microtechnology owns the copyrights associated with the information contained herein and gives consent for copies to be made of the information only for use within your organization with respect to Apex Microtechnology integrated circuits or other products of Apex Microtechnology. This consent does not extend to other copying such as copying for general distribution, advertising or promotional purposes, or for creating any work for resale.

APEX MICROTECHNOLOGY PRODUCTS ARE NOT DESIGNED, AUTHORIZED OR WARRANTED TO BE SUITABLE FOR USE IN PRODUCTS USED FOR LIFE SUPPORT, AUTOMOTIVE SAFETY, SECURITY DEVICES, OR OTHER CRITICAL APPLICATIONS. PRODUCTS IN SUCH APPLICATIONS ARE UNDERSTOOD TO BE FULLY AT THE CUSTOMER OR THE CUSTOMER'S RISK.

Apex Microtechnology, Apex and Apex Precision Power are trademarks of Apex Microtechnology, Inc. All other corporate names noted herein may be trademarks of their respective holders.