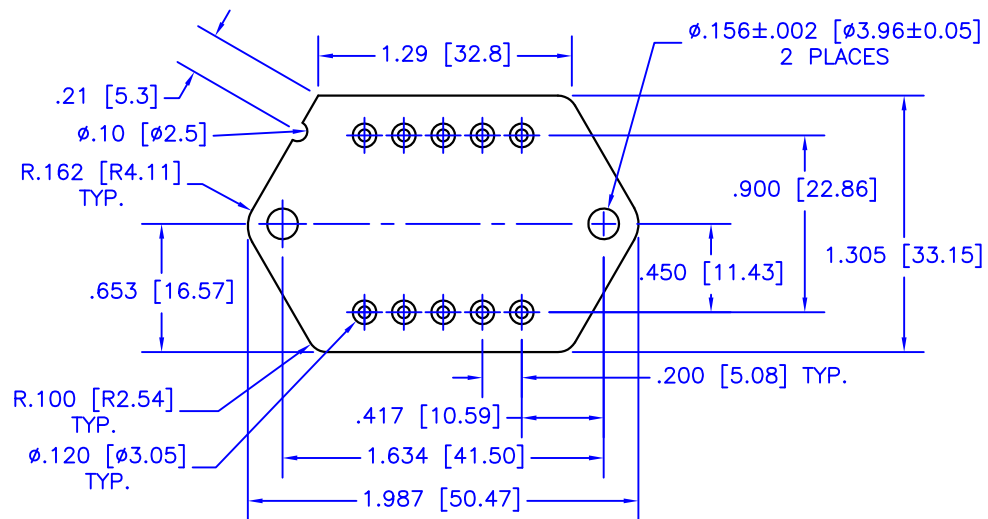
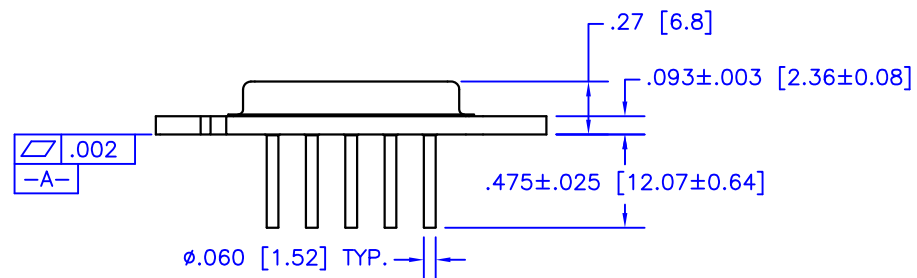
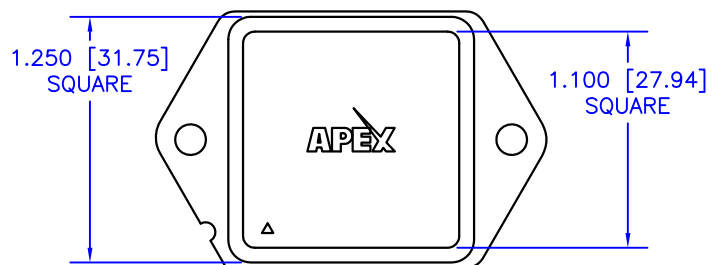
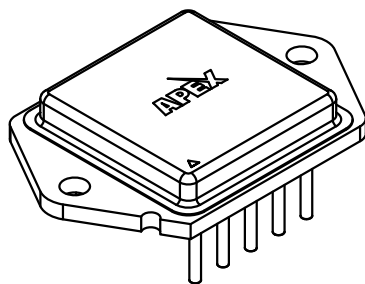


4

3

2

1



### NOTES:

1. Dimensions are in inches & [mm].
2. Triangle on lid and notch in header denote pin 1.
3. Header material: Nickel-plated CRS.
4. Lid material: Nickel 200 (99.4% Ni).
5. Pin material: Solderable nickel-plated Alloy 52.
6. Welded hermetic package seal.
7. Isolation: 1000 VDC any pin to case.
8. Package weight: 1.27 oz [36 g]

TOLERANCES - UNLESS OTHERWISE SPECIFIED

.XX = ±.01 [.254]

.XXX = ±.005 [.127]

ANG. = ±5°



TITLE: 10-pin POWER DIP, 60mil pins

SUBJECT: PACKAGE OUTLINE

ENGINEER: D-M

DRAWN BY: R.MOR

DCA: 13225

SPL 1 OF 1

MODEL:

DE

FILENAME: DE

REV: D

DATE: 29MAY13

4

3

2

1