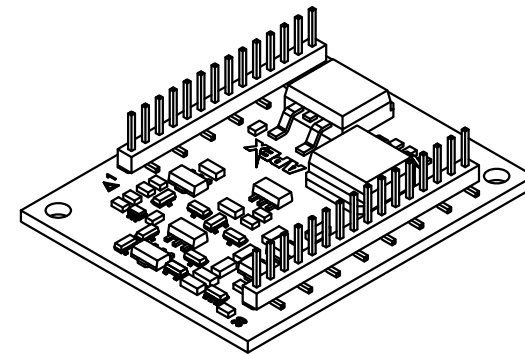
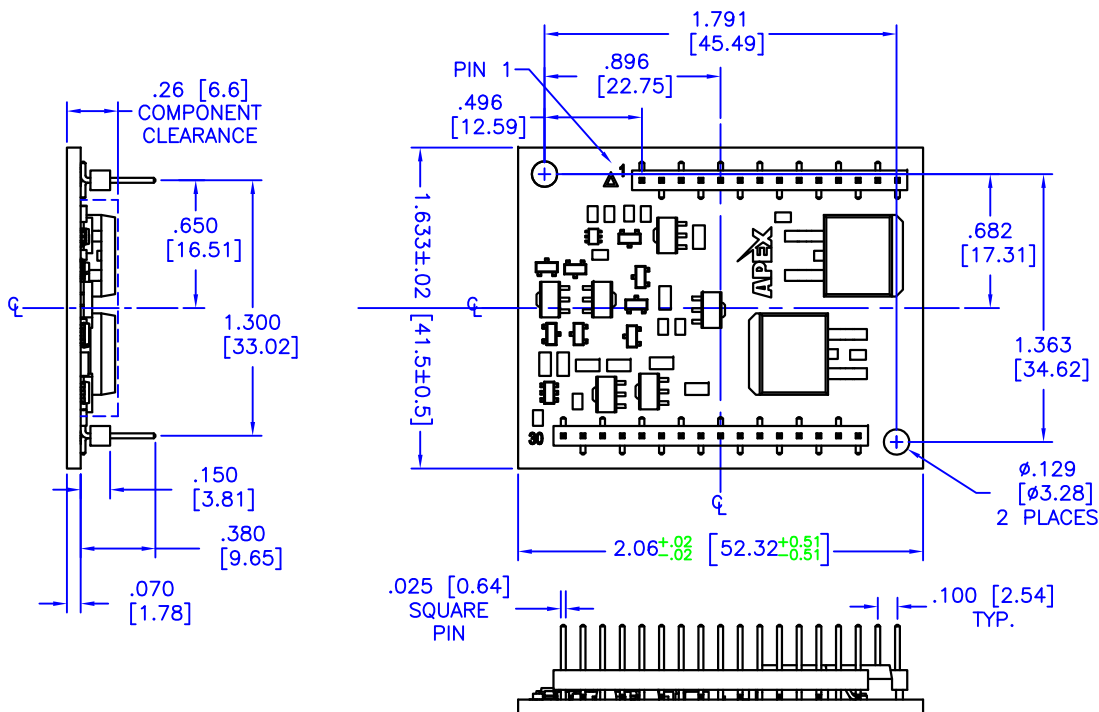


4

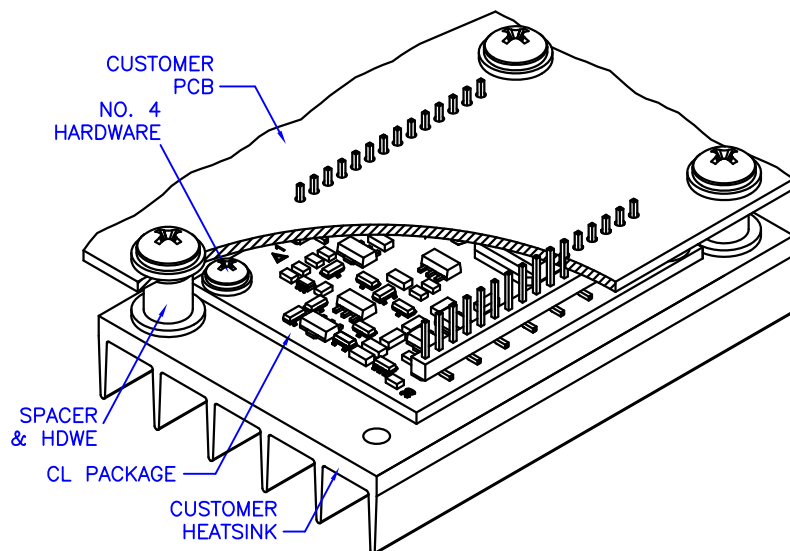
3

2

1



SUGGESTED MOUNTING METHOD



NOTES:

1. Dimensions are inches; alternate units are [mm].
2. Recommended PCB hole diameter for pins: .050"
3. 2 oz. copper over 600V dielectric over aluminum substrate
4. Tin-nickel plated phosphor bronze pins
5. Package weight: 0.56 oz. [15.9 g]
6. Mount with #4 or equivalent screws.
7. It is not recommended that mounting of the package rely on the pins for mechanical support. The mounting method shown does not represent a specific design solution or the only way to mount the package.
8. Care must be exercised in designing the mating board, to avoid interference among board components.

TOLERANCES - UNLESS OTHERWISE SPECIFIED

.XX = ±.01 [.254]

.XXX = ±.005 [.127]

ANG. = ±5°



TITLE: MODULAR 30-pin DIP, 1.3" SPACING

SUBJECT: PACKAGE OUTLINE

ENGINEER: D-M

DRAWN BY: R.MOR

DCA: 13225

SHL

OF 1

MODEL:

FILENAME: CL

REV: D

DATE: 29MAY13

CL

4

3

2

1