

4

3

2

1

D

D

C

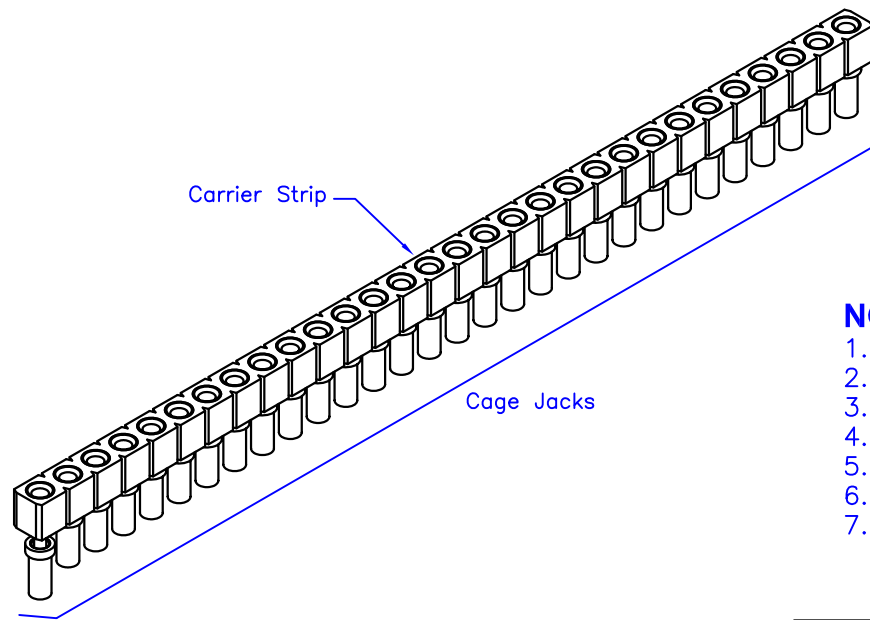
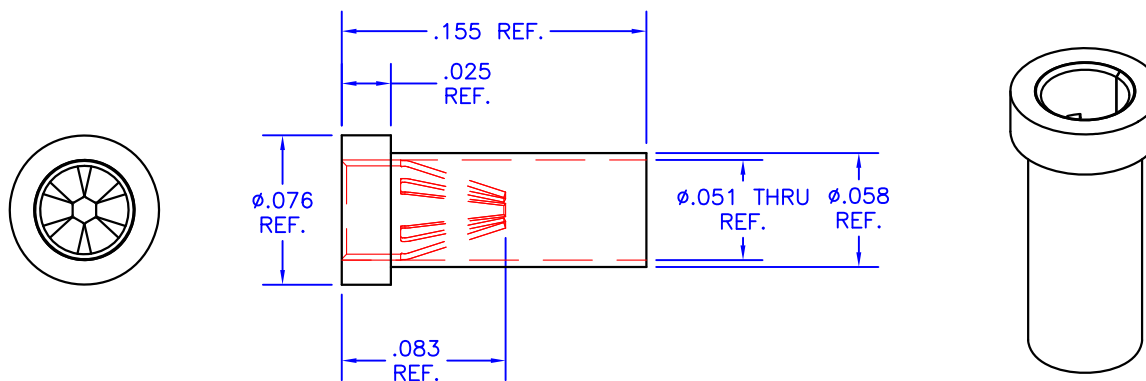
C

B

B

A

A

**NOTES:**

1. Unless otherwise noted, dimensions are in inches.
2. Shell: 360 brass, half-hard, with 200  $\mu$ m tin/lead over nickel
3. Contacts: Beryllium copper with 10  $\mu$ m gold over nickel
4. Current rating: 4.5 amps, for 10°C temperature rise.
5. Solder mount in minimum .059/.061 diameter mounting hole.
6. Mill-Max Part No. 0305-2-15-01-47-27-10-0
7. This receptacle is supplied on a 30-position carrier strip as Mill-Max part number S703-93-130-47-052100.

TOLERANCES - UNLESS OTHERWISE SPECIFIED

.XX =  $\pm 0.01$  [.254].XXX =  $\pm 0.005$  [.127]ANG. =  $\pm 5^\circ$ TITLE: PIN RECEPTACLE  
FOR .025-.037 DIAMETER PINS

SUBJECT: MECHANICAL DRAWING

ENGINEER: D-M DRAWN BY: R.MOR DCA: 13242 SHL 1 OF 1

FILENAME: MS11 REV: E DATE: 03JUN13

MODEL: MS11

MS11

FILENAME: MS11 REV: E DATE: 03JUN13

4

3

2

1